

# HUA YING INTELLIGENCE (SHENZHEN) CO., LTD



华盛智能(深圳)有限公司



Reporter: Flora



Date: 2023. 4. 21

## Company Profile

### Company Profile



华盈智能（深圳）有限公司是一家专注于0-150W中小功率适配器，智能充电器，PD充电器，数据线等产品的研发，生产和销售为一体的电源企业。

我司有200人，6条先进流水线，有配套变压器，线材生产部门。

主要产品系列有：5W, 7.5W, 12W, 13.5W, 18W, 24W, 36W, 72W, 150W电源，5W, 10W, 12W, 18W智能充电器，20W, 25W, 30W, 35W, 45W, 65W, 100W PD充电器。系列产品均已通过

CB, UL, ETL, GS, PSE, KC, KCC, EAC, BIS, BS, FCC, CCC, CE, KC, SAA, C-TICK, RCM全球认证。且均为EN61558+EN62368 双标准认证。主要服务于数码和小家电2个行业的客户。

公司严格执行ISO9001质量管理体系，确保产品质量。多年来，凭借着雄厚的开发能力及优良的产品质量，在国内外取得了很高的声誉，并成为国内外商家及国内多个知名品牌的OEM, ODM合作伙伴。

## Company Profile

### Company Profile



Hua Ying Intelligence (Shenzhen) Co., Ltd. is a power supply enterprise focusing on the research and development, production and sales of 0-180W small and medium power adapters, smart chargers, PD chargers, and other products.

Our main products are:

5W, 7.5W, 12W, 13.5W, 18W, 24W, 36W, 72W, 150W power supply;

5W, 10W, 12W, 18W smart charger; 20W, 25W, 30W, 35W, 45W, 65W, 100W PD charger;

The products have applied for CB, UL, ETL, GS, PSE, KC, KCC, EAC, BIS, BS, FCC, CCC, CE, KC, SAA, C-TICK, RCM and other global certifications.

Our goal is: to provide customers with comprehensive power solutions;

Our philosophy is: integrity, quality, innovation, and serve customers wholeheartedly;

Our advantages are: strong R&D team, advanced automatic production line, comprehensive ODM&OEM service.



# PRODUCT CATALOG



## PART ONE

POWER ADAPTERS



## PART TWO

SMART USB-A CHARGERS



## PART THREE

FAST USB-C CHARGERS



## PART FOUR

CAR CHARGERS



# POWER ADAPTER

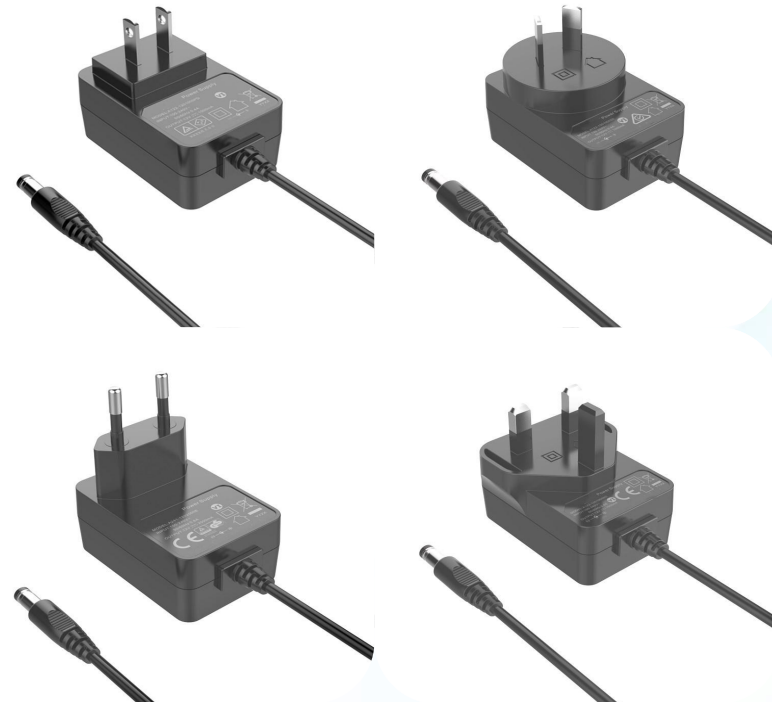




# Power Adapter

## 6-15W Wall Adapter

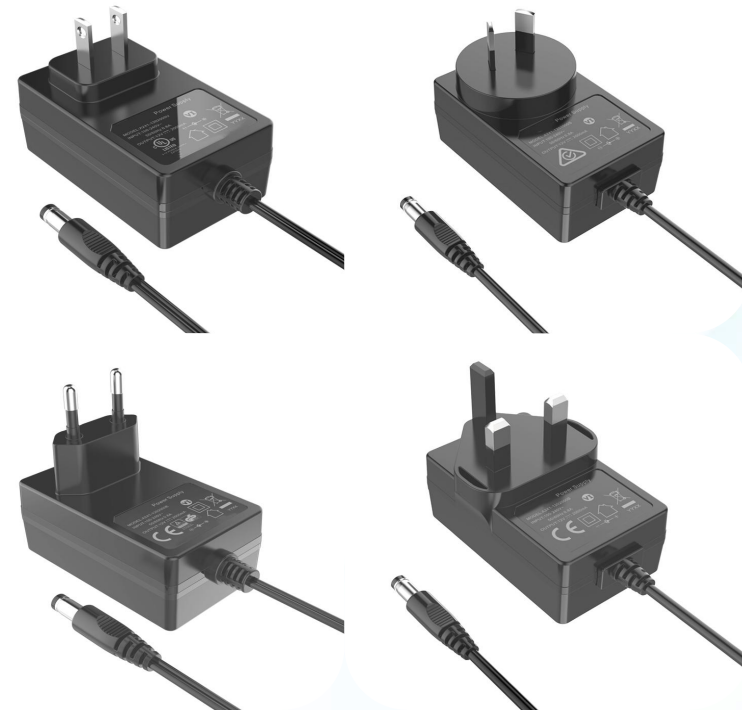
- Input: 100-240V~50/60Hz
- Output Voltage: 5-24V
- Output Current: 0.5-3A
- Hi-pot test: 3000V
- Ripple & noise: 150MV MAX
- Efficiency level: VI
- MTBF: 20000Hours
- AC PIN: CCC/US/EU/AU/UK/KC/PSE...



# Power Adapter

## 18-24W Wall Adapter

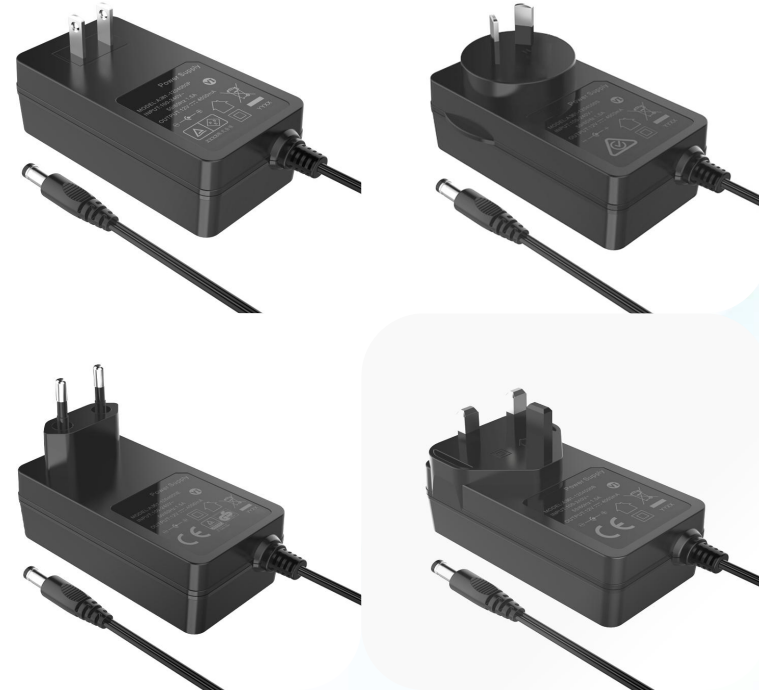
- Input: 100-240V~50/60Hz
- Output Voltage: 5-24V
- Output Current: 0.5-4A
- Hi-pot test: 3000V
- Ripple & noise: 150MV MAX
- Efficiency level: VI
- MTBF: 20000Hours
- AC PIN: CCC/US/EU/AU/UK/KC/PSE...



# Power Adapter

## 36-48W Wall Adapter

- Input: 100-240V~50/60Hz
- Output Voltage: 12-24V
- Output Current: 0.5-4A
- Hi-pot test: 3000V
- Ripple & noise: 150MV MAX
- Efficiency level: VI
- MTBF: 20000Hours
- AC PIN: CCC/US/EU/AU/UK/KC/PSE...

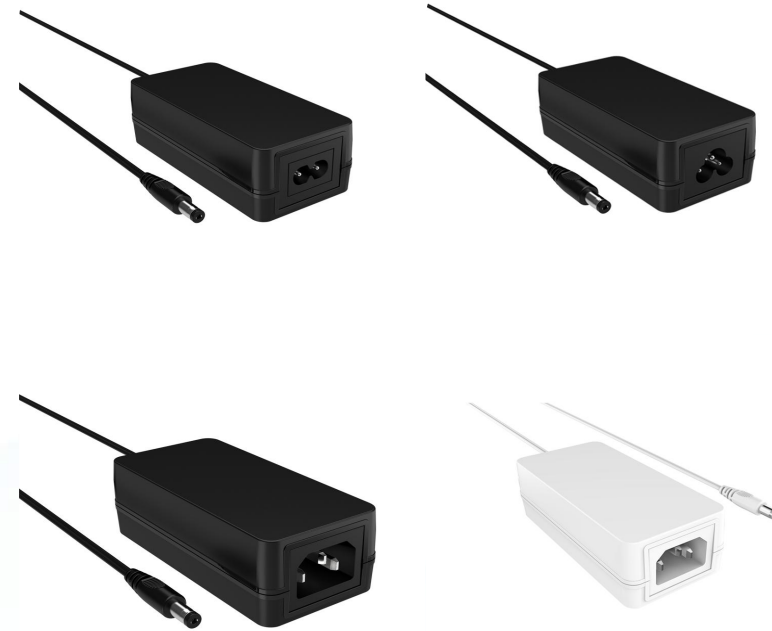




# Power Adapter

## 36-48W Desktop Adapter

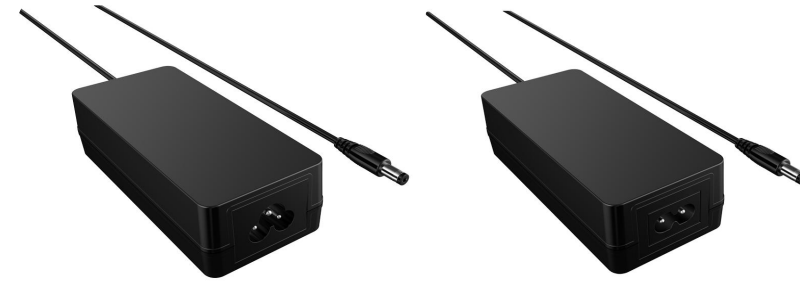
- Input: 100-240V~50/60Hz
- Output Voltage: 12-24V
- Output Current: 0.5-4A
- Hi-pot test: 3000V
- Ripple & noise: 150MV MAX
- Efficiency level: VI
- MTBF: 20000Hours
- AC PIN: CCC/US/EU/AU/UK/KC/PSE...



# Power Adapter

## 60-72W Desktop Adapter

- Input: 100-240V~50/60Hz 0.4A Max
- Output Voltage: 24-48V
- Output Current: 1.35-3A
- Hi-pot test: 3000V
- Ripple & noise: 150MV MAX
- Efficiency level: VI
- MTBF: 20000Hours
- AC PIN: CCC/US/EU/AU/UK/KC/PSE...



C6

C8



C14



# Power Adapter

## 90-120W Desktop Adapter

- Input: 100-240V~50/60Hz 0.4A Max
- Output Voltage: 12-24V
- Output Current: 4-10A
- Hi-pot test: 3000V
- Ripple & noise: 150MV MAX
- Efficiency level: VI
- MTBF: 20000Hours
- AC PIN: CCC/US/EU/AU/UK/KC/PSE...



# Power Adapter

## 180W Desktop Adapter

- Input: 100-240V~50/60Hz 3A Max
- Output Voltage: 9-60V
- Output Current: 0.1-12A
- Size: 158.8\*66\*31.8mm
- Hi-pot test: 3000V
- Ripple & noise: 150MV MAX
- Efficiency level: VI
- MTBF: 20000Hours
- AC PIN: CCC/US/EU/AU/UK/KC/PSE...



# Smart Charger





# Smart Charger

## 10W USB-A Charger

- Input: 100-240V~50/60Hz
- Output: 5V/1A-2A
- Size: 41\*34\*21mm
- Hi-pot test: 3000V
- Ripple & noise: 150MV MAX
- Efficiency level: VI
- AC PIN: CCC/US/EU/AU/UK/KC/PSE...



# Smart Charger

## 12W 2A ports Charger

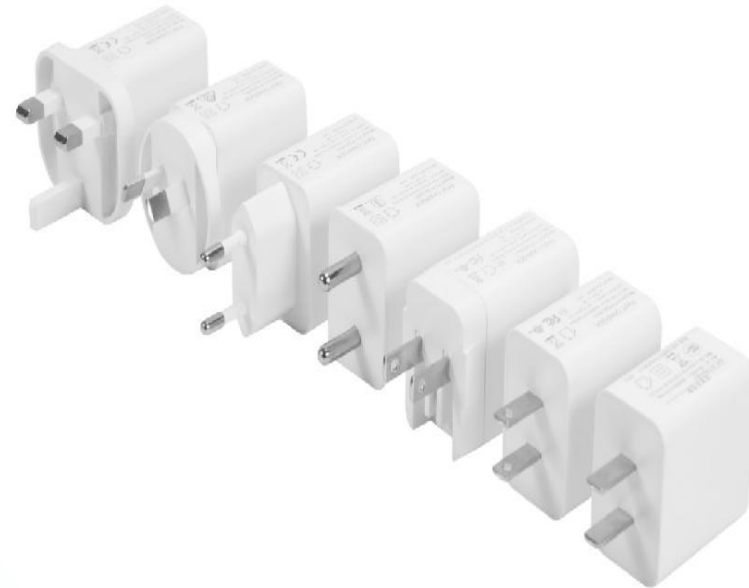
- Input: 100-240V~50/60Hz
- Output: 5V/2.4A
- Size: 45\*39\*26mm
- Hi-pot test: 3000V
- Ripple & noise: 150MV MAX
- Efficiency level: VI
- AC PIN: CCC/US/EU/AU/UK/KC/PSE...



# Smart Charger

## 15W USB-A Charger

- Input: 100-240V~50/60Hz
- Output: 5V/3A
- Size: 43\*39\*26mm
- Hi-pot test: 3000V
- Ripple & noise: 150MV MAX
- Efficiency level: VI
- AC PIN: CCC/US/EU/AU/UK/KC/PSE...



# Smart Charger

## 17W 2ports USB-A Charger

- Input: 100-240V~50/60Hz
- Output: 5V/3.4A
- Size: 45\*39\*26mm
- Hi-pot test: 3000V
- Ripple & noise: 150MV MAX
- Efficiency level: VI
- AC PIN: CCC/US/EU/AU/UK/KC/PSE...



# Smart Charger

## 24W Smart Charger

- Input: 100-240V~50/60Hz
- Output: 12V2A; 12V2.5A; 12V3A; 15V/1.5A; 15V2A; 24V1A
- Output port: DC-Cable
- Size: 63\*63\*30mm
- Hi-pot test: 3000V
- Ripple & noise: 150MV MAX
- Efficiency level: VI
- AC PIN: CCC/US/EU/AU/UK/KC/PSE...





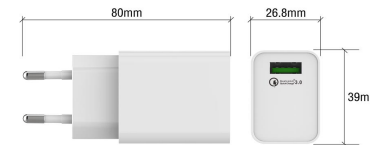
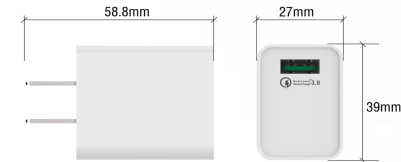
# FAST CHARGER



# Fast A Charger

## QC3.0 18W Charger

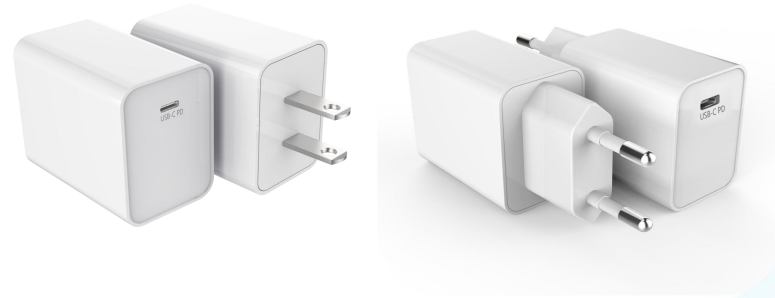
- Input: 100-240V~50/60Hz
- Output: 5V3A, 9V2A, 12V1.5A
- Size: 43\*39\*27mm
- Hi-pot test: 3000V
- Ripple & noise: 150MV MAX
- Efficiency level: VI
- AC PIN: CCC/US/EU/AU/UK/KC/PSE...



# Fast Charger

## PD20W Charger 01

- Input: 100-240V~50/60Hz
- Output PD: 5V/3A, 9V/2.22A, 12V/1.67A
- Output port: Type-C
- Size: 43\*39\*27mm
- Hi-pot test: 3000V
- Ripple & noise: 150MV MAX
- Efficiency level: VI
- AC PIN: CCC/US/EU/AU/UK/KC/PSE...



# Fast Charger

## PD20W Charger 02

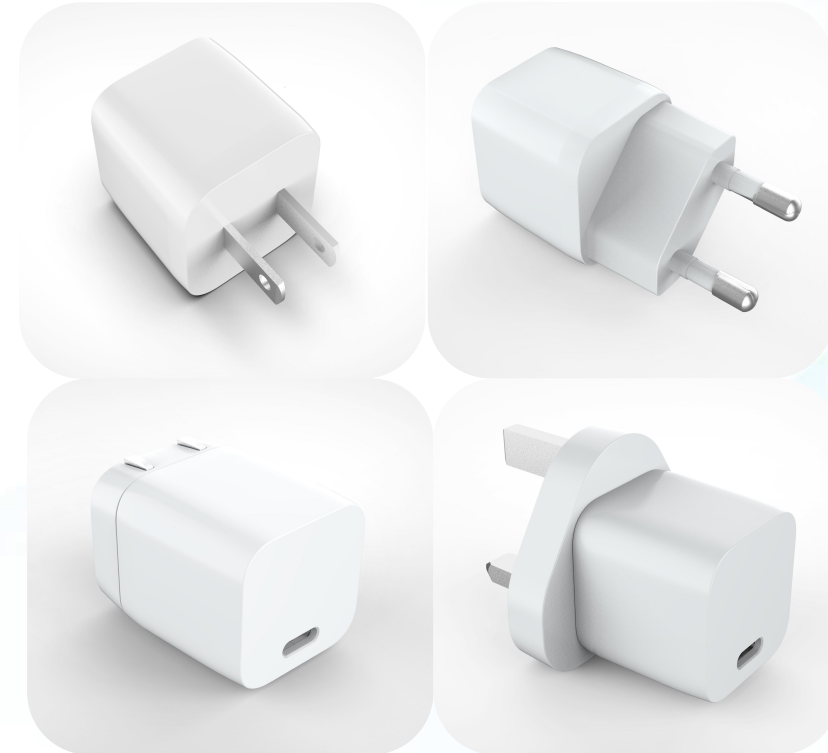
- Input: 100-240V~50/60Hz
- Output-C: 5V/3A, 9V/2.22A, 12V/1.67A
- Output port: Type-C
- Size: 34\*34\*38mm
- Hi-pot test: 3000V
- Ripple & noise: 150MV MAX
- Efficiency level: VI
- AC PIN: CCC/US/EU/AU/UK/KC/PSE...



# Fast Charger

## PD20W Charger 03

- Input: 100-240V~50/60Hz
- Output-C: 5V/3A, 9V/2.22A, 12V/1.67A
- Output port: Type-C
- Size: 32\*32\*31mm
- Hi-pot test: 3000V
- Ripple & noise: 150MV MAX
- Efficiency level: VI
- AC PIN: CCC/US/EU/AU/UK/KC/PSE...





# Fast Charger

## PD20W A+C Charger

- Input: 100-240V~50/60Hz
- Output-A: 5V/3A, 9V/2.22A, 12V/1.5A
- Output-C: 5V/3A, 9V/2.22A, 12V/1.67A
- Size: 43\*40\*28mm
- Hi-pot test: 3000V
- Ripple & noise: 150MV MAX
- Efficiency level: VI
- AC PIN: CCC/US/EU/AU/UK/KC/PSE...



# Fast Charger

## PD25W A+C Charger 01

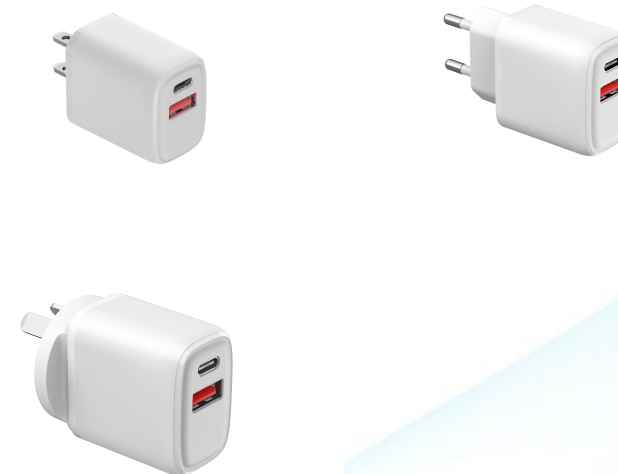
- Input: 100-240V~50/60Hz
- Output-A: 5V/3A, 9V/2.22A, 12V/1.5A
- Output-C: 5V3A, 9V/2.77A, 12V/2.08A
- Size: 53\*40\*28mm
- Hi-pot test: 3000V
- Ripple & noise: 150MV MAX
- Efficiency level: VI
- AC PIN: CCC/US/EU/AU/UK/KC/PSE...



# Fast Charger

## PD25W A+C Charger 02

- Input: 100-240V~50/60Hz
- Output-A: 5V/3A, 9V/2A, 12V/1.5A
- Output-C: 5V/6V3A, 9V/2.77A, 12V/2.08A
- Size 43\*43\*30mm
- Hi-pot test: 3000V
- Ripple & noise: 150MV MAX
- Efficiency level: VI
- AC PIN: CCC/US/EU/AU/UK/KC/PSE...



# Fast Charger

## PD 30W Charger

- Input: 100-240V~50/60Hz
- Output-C: 5V/6V3A, 9V/3A 12V/2.5A, 15V/2A, 20V/1.5A
- Size: 32\*32\*31mm
- Hi-pot test: 3000V
- Ripple & noise: 150MV MAX
- Efficiency level: VI
- AC PIN: CCC/US/EU/AU/UK/KC/PSE...



# Fast Charger

## PD30W A+C Charger 01

- Input: 100-240V~50/60Hz
- Output-A: 5V/3A, 9V/2A, 12V/1.5A
- Output-C: 5V/3A, 9V/3A, 12V/2.5A, 15V/2A, 20V/1.5A
- Hi-pot test: 3000V
- Ripple & noise: 150MV MAX
- Efficiency level: VI
- AC PIN: CCC/US/EU/AU/UK/KC/PSE...



# Fast Charger

## PD30W A+C Charger 02

- Input: 100-240V~50/60Hz
- Output-A: 5V/3A, 9V/2A, 12V/1.5A
- Output-C: 5V/6V3A, 9V/3A, 12V/2.5A, 15V/2A, 20V/1.5A
- Size: 43\*43\*30mm
- Hi-pot test: 3000V
- Ripple & noise: 150MV MAX
- Efficiency level: VI
- AC PIN: CCC/US/EU/AU/UK/KC/PSE...





# Fast Charger

## PD40W 2C ports charger

- Input: 100-240V~50/60Hz
- Output-C1: 5V/3A, 9V/2.2A, 12V/1.67A
- Output-C2: 5V/3A, 9V/2.2A, 12V/1.67A
- Size: 55\*55\*30mm
- Hi-pot test: 3000V
- Ripple & noise: 150MV MAX
- Efficiency level: VI
- AC PIN: CCC/US/EU/AU/UK/KC/PSE...



# Fast Charger

## PD45W Charger

- Input: 100-240V~50/60Hz
- Output-C: 5V/3A, 9V/3A, 12V/3A, 15V/3A, 20V/2.25A
- Size: 43\*40\*40mm
- Hi-pot test: 3000V
- Ripple & noise: 150MV MAX
- Efficiency level: VI
- AC PIN: CCC/US/EU/AU/UK/KC/PSE...



# Fast Charger

## PD45W A+C Charger

- Input: 100-240V~50/60Hz
- Output-A: 5V/3A, 9V/2A, 12V/1.5A
- Output-C: 5V/3A, 9V/3A, 12V/3A, 15V/3A, 20V/2.25A
- Size: 53\*47\*28mm
- Hi-pot test: 3000V
- Ripple & noise: 150MV MAX
- Efficiency level: VI
- AC PIN: CCC/US/EU/AU/UK/KC/PSE...



# Fast Charger

## PD65W A+C Charger 01

- Input: 100-240V~50/60Hz
- Output-A: 5V/9V3A, 12V1.5A
- Output-C: 5V/3A, 9V/3A, 12V/3A, 15V/3A, 20V/3.25A ;  
USB-A+Typec1=45W+18W
- Size: 43\*40\*45 mm
- Hi-pot test: 3000V
- Ripple & noise: 150MV MAX
- Efficiency level: VI
- AC PIN: CCC/US/EU/AU/UK/KG/PSE...



# Fast Charger

## PD65W A+C Charger 02

- Input: 100-240V~50/60Hz
- Output-A: 5V3, 9V3A, 12V1.5A
- Output-C: 5V/3A, 9V/3A, 12V/3A, 15V/3A, 20V/3.25A;  
USB-A+Typec1=45W+18W
- Size: 60\*60\*28 mm
- Hi-pot test: 3000V
- Ripple & noise: 150MV MAX
- Efficiency level: VI
- AC PIN: CCC/US/EU/AU/UK/KG/PSE...



# Fast Charger

## PD65W A+C Charger 03

- Input: 100-240V~50/60Hz
- Output-A: 5V/3A, 9V2A, 12V1.5A
- Output-C: 5V/3A, 9V/3A, 12V/3A, 15V/3A, 20V/3.25A

USB-A+Typec1=45W+18W

- Size: 53\*47\*28mm
- Hi-pot test: 3000V
- Ripple & noise: 150MV MAX
- Efficiency level: VI
- AC PIN: CCC/US/EU/AU/UK/KG/PSE...





# Fast Charger

## PD65W 2C+1A Charger

- Input: 100-240V~50/60Hz
- Output-A : 5V3A, 9V/2A, 12V1.5A
- Output-C1&C2: 5V/3A, 9V/3A, 12V/3A, 15V/3A, 20V/3.25A
- Output-C1+C2: 45W+20W      Output C1+A1: 45W+18W
- Output-C1+C2+A1: 45W+7.5W+7.5W;      Total: 65W Max
- Size: 55\*55\*30mm
- Hi-pot test: 3000V
- Ripple & noise: 150MV MAX
- Efficiency level: VI
- AC PIN: CCC/US/EU/AU/UK/KC/PSE...



# Fast Charger

## PD100W 2C+1A Charger

- Output-A: 4.5V/5A, 5V/4.5A, 9V/3A, 12V2.5A
- Output-C1&C2: 5V/3A, 9V/3A, 12V/3A, 15V/3A, 20V/5A
- Output-C1+C2: 65+30W    Output-C1+A: 65+30W
- Output-C2+A: 65+30W    Output-C1+C2+A: 60+20+18W  
Output Total: 100W Max
- Size: 60\*60\*29mm
- Hi-pot test: 3000V
- Ripple & noise: 150MV MAX
- Efficiency level: VI
- AC PIN: CCC/US/EU/AU/UK/KC/PSE...



# Fast Charger

## Desktop PD100W Charger

- Input: 100-240V~50/60Hz
- Output: USB1&2: 5V/3A, 9V/2A, 12V/1.5A
- Output-C1: 5V/9V/12V/15V/20V/3A
- Output-C2&3: 5V/3A, 9V/2A, 12V/1.5A
- Size: 102\*72\*28mm
- Hi-pot test: 3000V
- Ripple & noise: 150MV MAX
- Efficiency level: VI
- AC PIN: CCC/US/EU/AU/UK/KG/PSE...



# CAR CHARGER



# Car Charger

## 17W Car Charger 01

- Input: 12V-24V
- Output:
  - USB1: 5V/1A
  - USB2: 5V/2.4A
- Size: 56\*26\*26mm
- Color: White, Black





# Car Charger

## 18W A+C Car Charger

- Input: 12V-24V
- Output:
  - Type-C: 5V/3A, 9V/2A, 12V1.5A
  - USB: 5V/2.4A
- Size: 68\*28\*28mm
- Color: White, Black





# Car Charger

## 18W 2A ports Car Charger

- Input: 12V-24V
- Output:
  - USB1: 5V/3A, 9V/2A, 12V/1.5A
  - USB2: 5V/2.4A
- Size: 63\*25\*25mm
- Color: White, Black



# Car Charger

## 12W Car Charger

- Input: 12V-24V
- Output: DC Line: 5V2.4A
- Size: 72.5\*30.5\*25.5mm
- Color: White, Black



## Contact us



Tel:

**+86-18219149937**

Email Address:

**flora@huaying-int.com**

地址:

**SHENZHEN, CHINA**